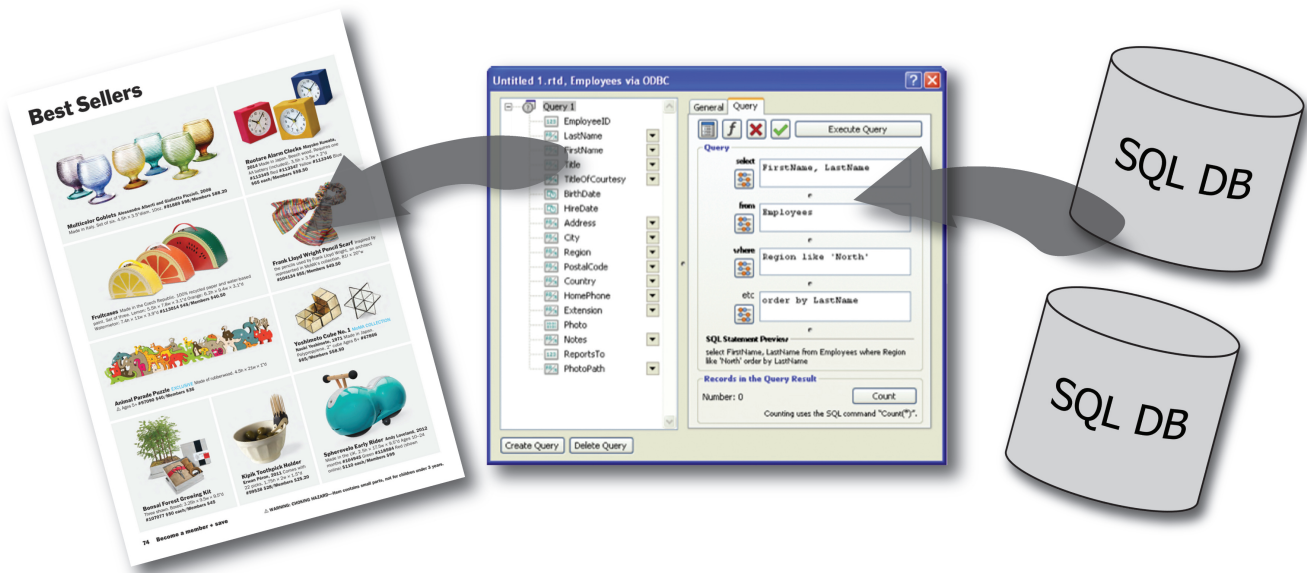


Connect Pro for RagTime



SQL Database Connectivity for RagTime Documents



Connect Pro is an SQL database connection for RagTime. With Connect Pro, it is possible for RagTime documents to dynamically access the contents of databases in a professional page layout environment.

Database queries are entered into a query builder window and can incorporate formulas. Database fields can be placed in the document via “drag & drop”. Queries can be saved for use in RagTime forms and for recurring procedures, making it easy for anyone to update important business documents with current database data.

Print and publish

Page layout and catalog production with structured content can be created easily using the extensive layout capability of RagTime. High color fidelity is supported for professional printing, PDF generation, HTML export, and mail merge. A high degree of automation ensures quality and speeds up production.

SQL and ODBC

A knowledge of SQL suffices to create database queries using standard SQL statements. Saved queries can be executed by anyone within a RagTime document, without SQL knowledge. All major SQL database environments are supported via ODBC. Common data types, including BLOBs, are supported.

Features & Benefits

SQL database

- Predefined SQL queries
- Formulas can be used in SQL queries or in documents to access data

Connect Pro with RagTime

- Publishing automation
- High-fidelity printing and PDFs
- Images from SQL BLOBs or via file path references
- SQL report pages incl. spreadsheets, images, graphs, etc.
- Document presents backend SQL database data

System Requirements

- RagTime 7 or newer
- Mac: iODBC framework required
- ODBC database driver, e.g. MySQL

SQL database connectivity for RagTime documents

Easy query entry

A structured query dialog allows entering the query elements. Convenient buttons allow selecting a formula and entering references to a spreadsheet. Subsequent queries can then be automatically formulated, or built on-the-fly based upon user input. Once the query is constructed, it can be executed manually (e.g. via a button in the RagTime document), or automatically (e.g. when a selection formula result has changed).

Using query results

Once the initial query has been executed, the RagTime inventory lists the resulting field names available for use in the document. Fields can be positioned via “drag & drop”, or can be referenced in formulas. The handy controls palette allows navigating through the query results, to view the data in the document for each record. A query in a document can be “fixed” so that no new data is retrieved from the database.

Saved queries

Documents containing Connect Pro queries can be saved for later use, even by those with no SQL skills. In this manner, up-to-date documents can be automatically produced as needed.

References

Data returned by the database can be used in RagTime formulas in text containers, spreadsheet cells, or graphs. The data can be presented as-is, or used in the formula to produce a new result.

Data types

Besides common data types (“text”, “numbers” and “date”), Connect Pro also supports the use of BLOBs (*Binary Large Objects*), which can be read from a database and used in RagTime. These BLOBs may contain any data type that can be imported into RagTime, e.g. pictures (TIFF, BMP, WMF, EMF, EPS, PICT, JPEG, ...), text files (Word, Windows, Mac OS, Unicode) or table formats (Excel, SYLK). In addition to BLOBs, it is possible to store references via a file path which refers to the external data (e.g. images, documents).

MySQL sample database

After RagTime Connect Pro is installed, sample documents with SQL queries are available for testing. RagTime hosts a public MySQL sample database which allows evaluating RagTime Connect Pro without any custom database setup. For this reason MySQL ODBC drivers for Mac are installed with RagTime Connect Pro.

Use cases

RagTime Connect Pro is ideal for:

- Mail merge (serial printouts)
- Catalog productions
- Business reports
- Price lists
- Analyses, statistics, etc.

Certified databases

- MySQL
- Microsoft SQL Server
- Oracle Database
- Any ODBC compliant database should work

Licensing

Connect Pro is licensed on a per-RagTime user basis. Licenses (serial number with code) are available in increments of 1 and 5 users.

A product from:

RagTime.de Development GmbH
Steinriede 3
30827 Garbsen
Hannover, Germany
Phone: +49-5131-709360
Internet: www.ragtime.de

More details on the RagTime website: www.ragtime.de

Your RagTime partner:
